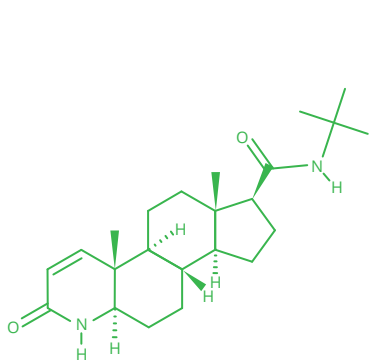
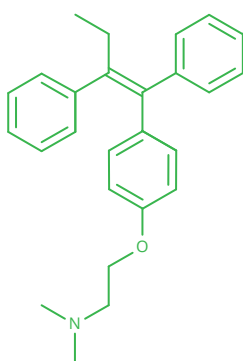


Hormones receptors agents

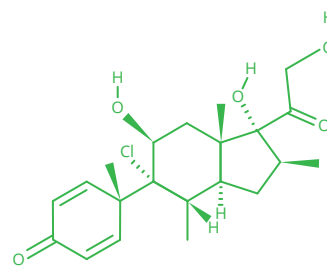
Hormones are responsible for carrying out various functions in the human body. A treatment of lot of diseases is based on hormones receptor – targeted agent interaction. In this application is shown a precise lc/ms method for analysis of drugs agents finasteride, tamoxifen, used in cancer therapy, and beclomethasone, well known agent for asthma managment.



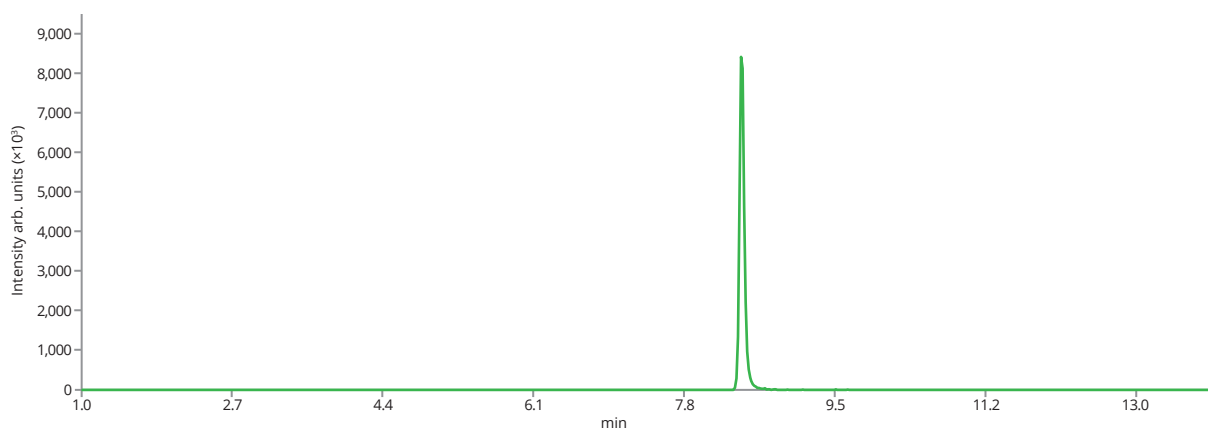
Finasteride



Tamoxifen

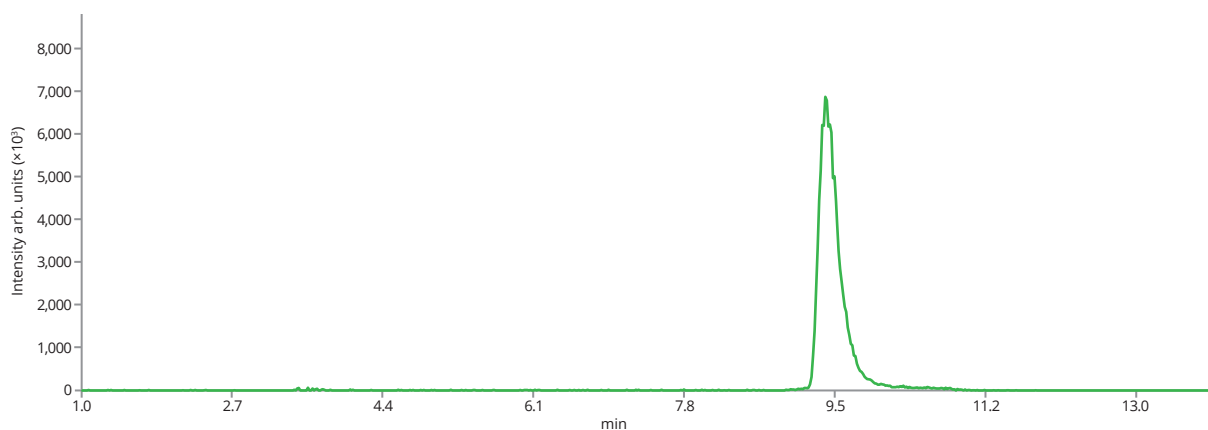


Beclomethasone

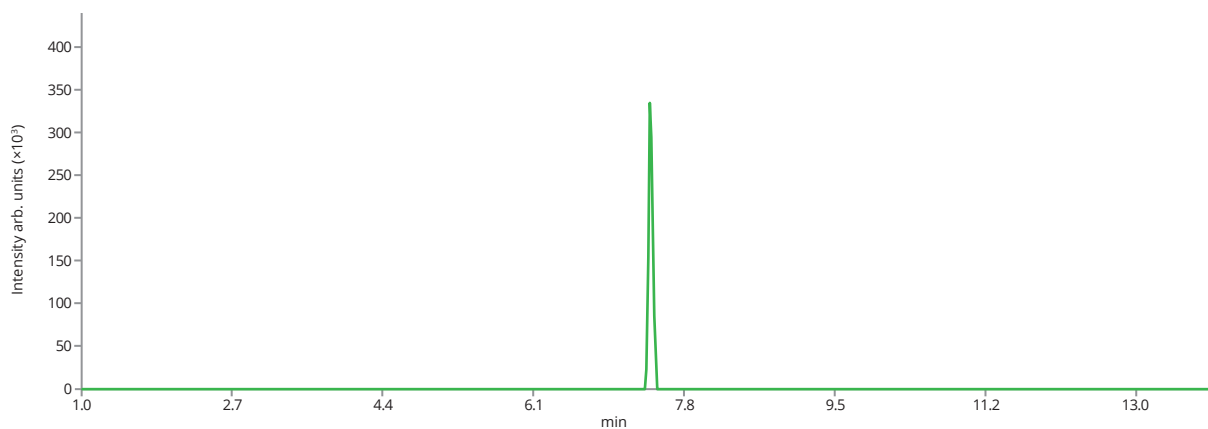


Finasteride RT: 8.45, m/z 373.2855

Hormones receptors agents



Tamoxifen RT: 9.41, m/z 372.2327



Beclomethasone RT: 7.45, m/z 409.1782



Hormones receptors agents

Column	ASTRA® C18-HE, 3 µm		
Dimensions	75 mm × 2.1 mm		
Part number	AST-5732-IH21		
Mobile phase	A: DDW + 0.1% Formic Acid B: ACN + 0.1% Formic Acid		
Gradient elution	Time	A (%)	B (%)
	0	90	10
	1	90	10
	4	75	25
	8	60	40
	10	0	100
	14	0	100
	14.01	90	10
	15	90	10
	17	90	10
Flow rate	0.35 mL/min		
Temperature	23 °C		
Detection	Full scan (resolving power 120 000, m/z 200), positive mode		
Injection volume	5 µL		
Analytes	1. Finasteride , CAS number 98319-26-7 2. Tamoxifen , CAS number 10540-29-1 3. Beclomethasone , CAS number 4419-39-0		