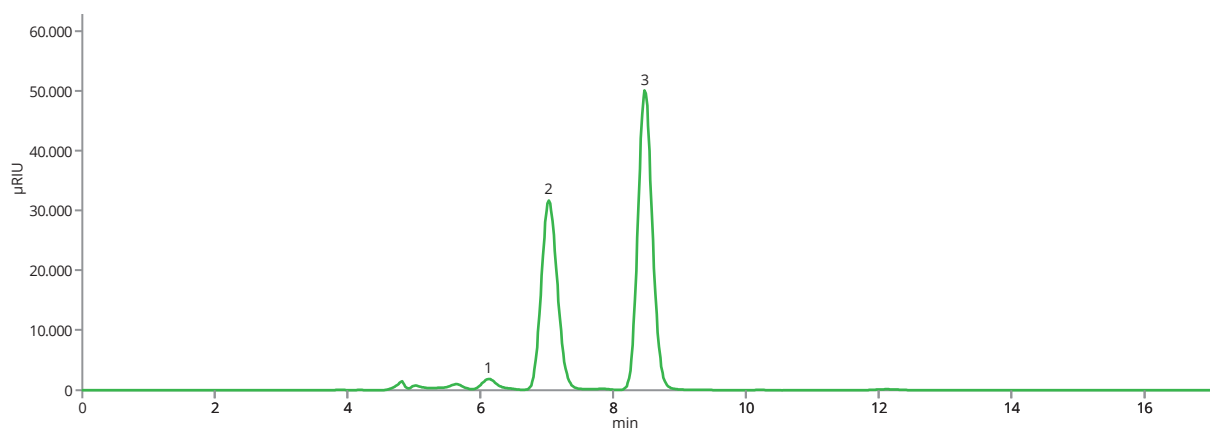


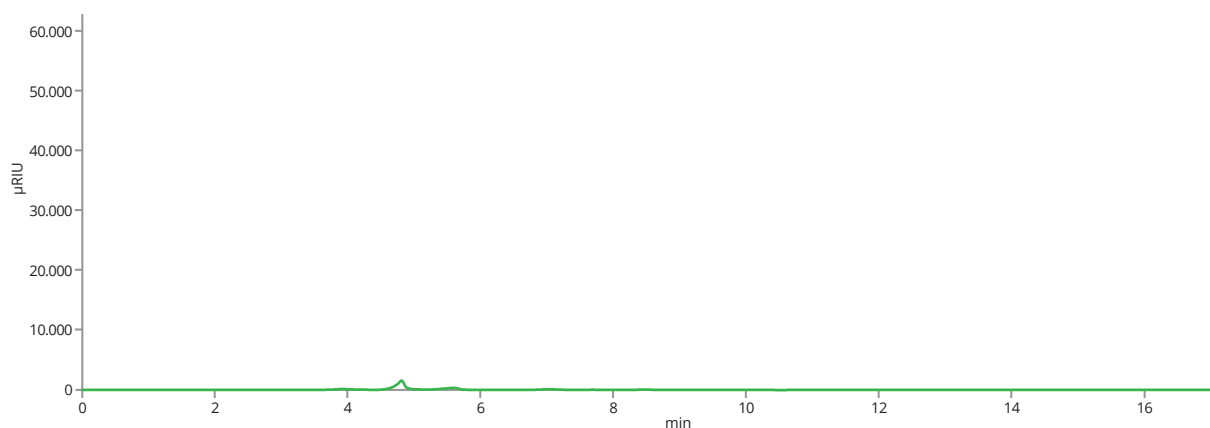


## Sugars in non-alcoholic beverages

Non-alcoholic beverages are popular among children and adolescents. Due to high content, the sugars separation and quantification in these products are often challenging. In the tested non-alcoholic beverages, a several sugars, such as sucrose, glucose and fructose, were detected in a different proportions.



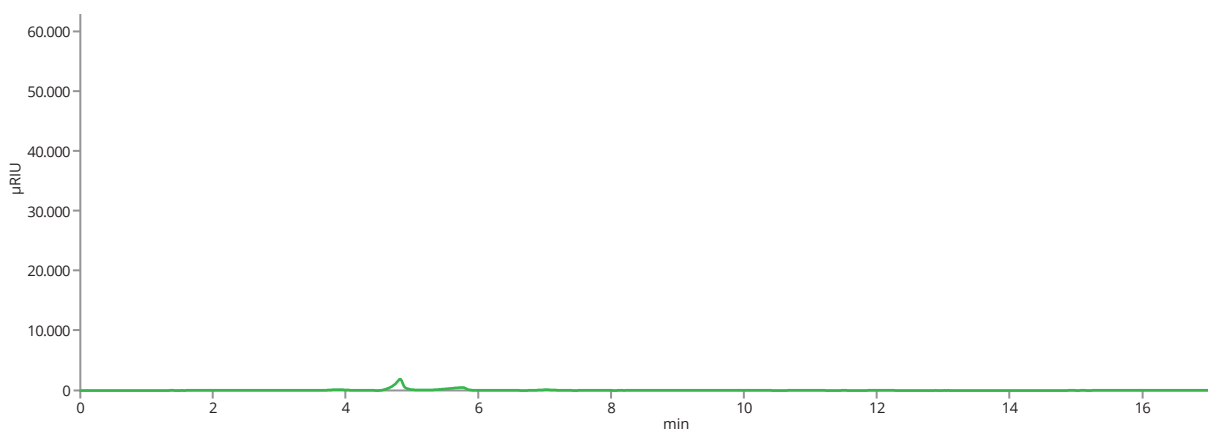
*Coca-Cola Classic profile on ASTRA® Sugar Ca column*



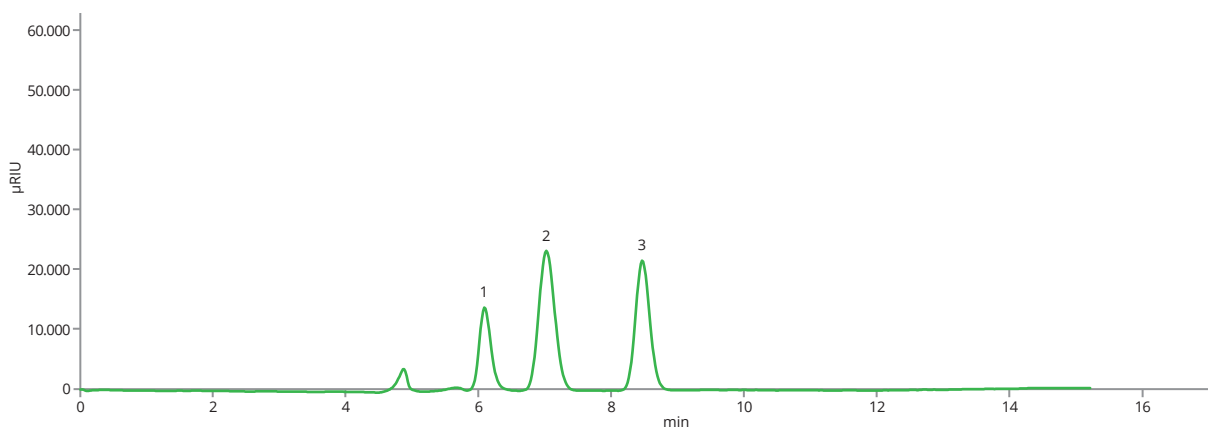
*Coca-Cola Light profile on ASTRA® Sugar Ca column*



## Sugars in non-alcoholic beverages

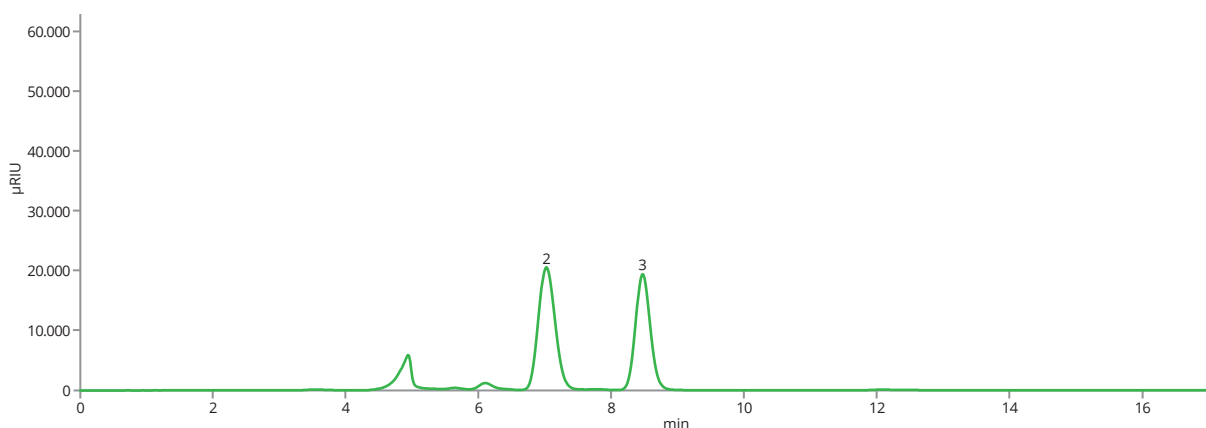


*Coca-Cola Zero profile on ASTRA® Sugar Ca column*



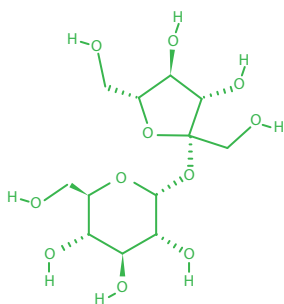
*Kofola profile on ASTRA® Sugar Ca column*

## Sugars in non-alcoholic beverages

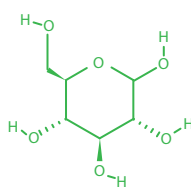


Apple juice concentrate profile on ASTRA® Sugar Ca column

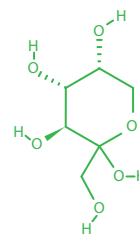
<b>Column</b>	ASTRA® Sugar Ca(S), 10 μm
<b>Dimensions</b>	300 mm × 8 mm
<b>Part number</b>	AST-5906-VN80
<b>Mobile phase</b>	100% H <sub>2</sub> O
<b>Flow rate</b>	1.0 mL/min
<b>Temperature</b>	80 °C
<b>Injection volume</b>	3 μL
<b>Detection</b>	RID (55 °C)
<b>Analytes</b>	<b>1. Sucrose, CAS number 57-50-1</b> <b>2. Glucose, CAS number 2280-44-6</b> <b>3. Fructose, CAS number 57-48-7</b>



Sucrose



Glucose



Fructose