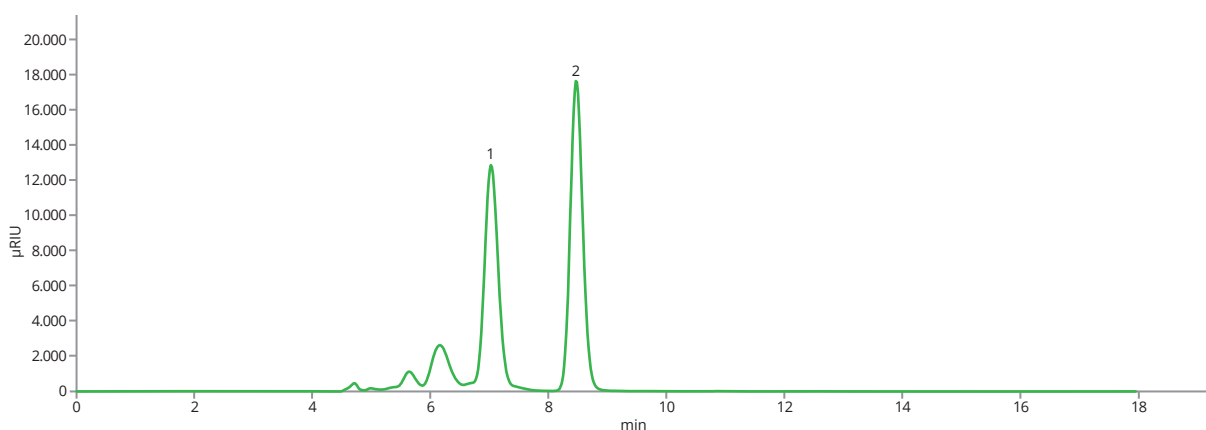
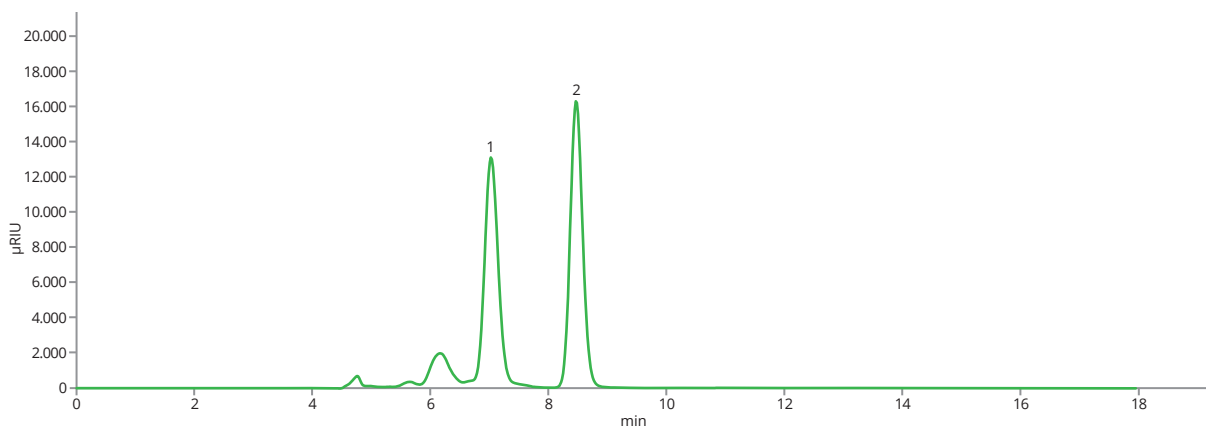


## Sugars in honey

Honey has been used since ancient times as a food and in medicine. Its composition is highly variable depending on its botanical and geographical origin. It is mainly composed of a mixture of different sugars, which daily intake should be controlled due to the nutritional reasons. In this application the chromatographic profiles of sugars in several honey varieties are shown.



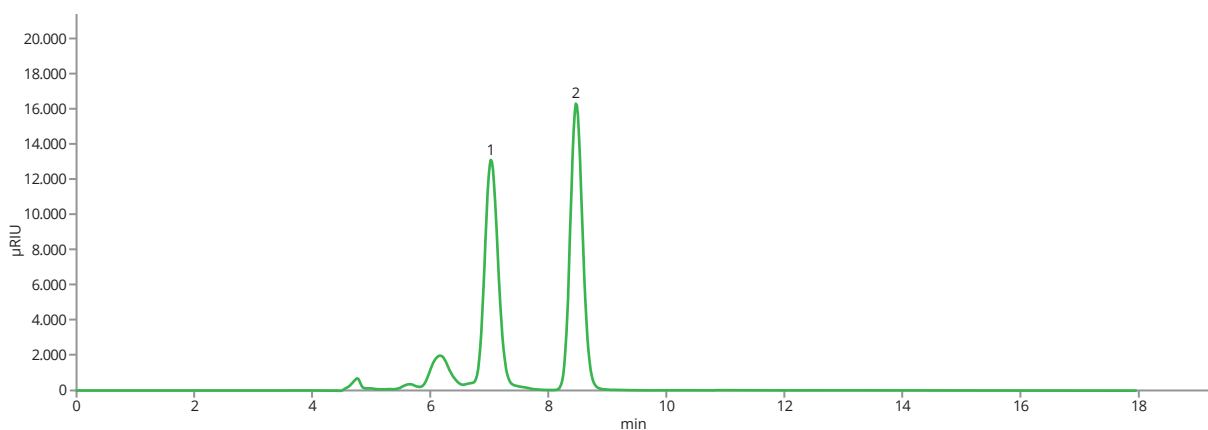
*Honeydew honey profile on ASTRA® Sugar Ca column*



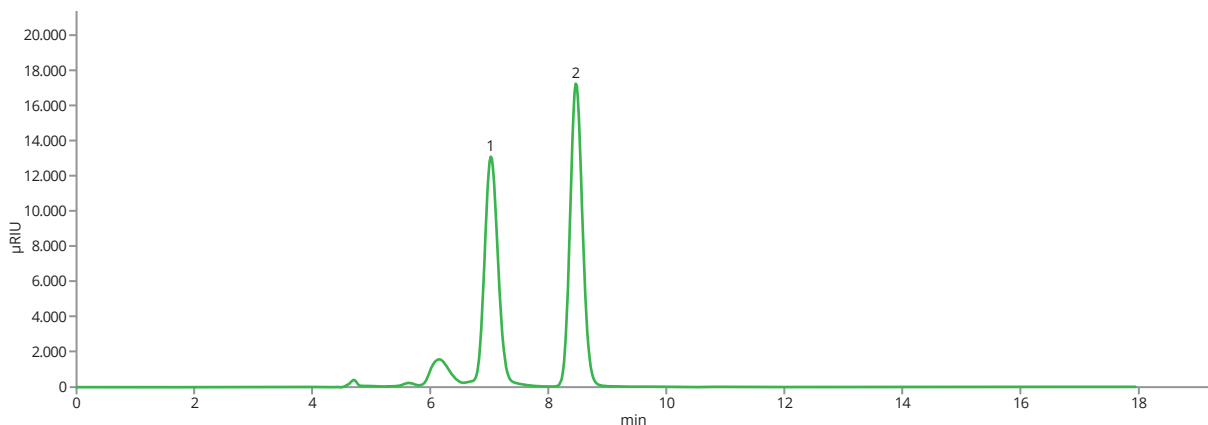
*Forest honey profile on ASTRA® Sugar Ca column*



## Sugars in honey



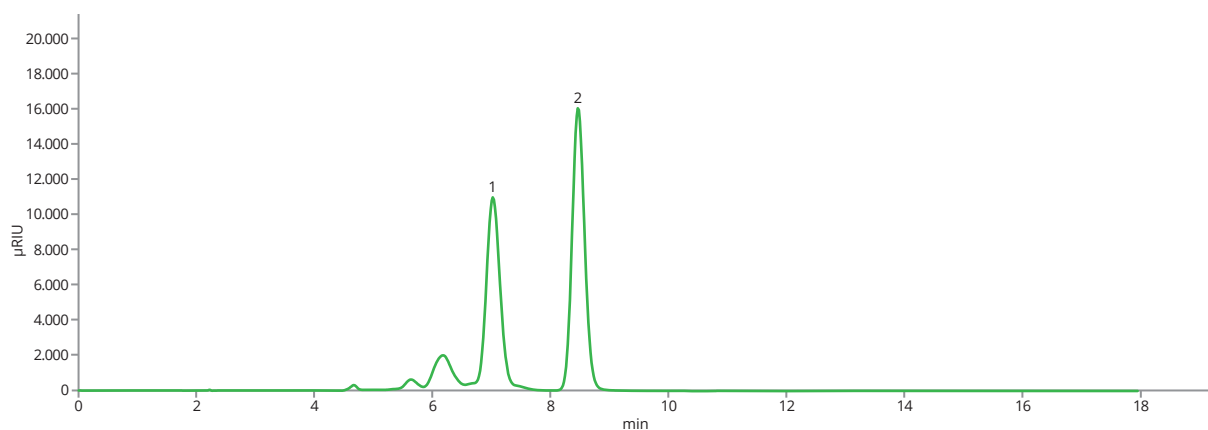
*Linden honey profile on ASTRA® Sugar Ca column*



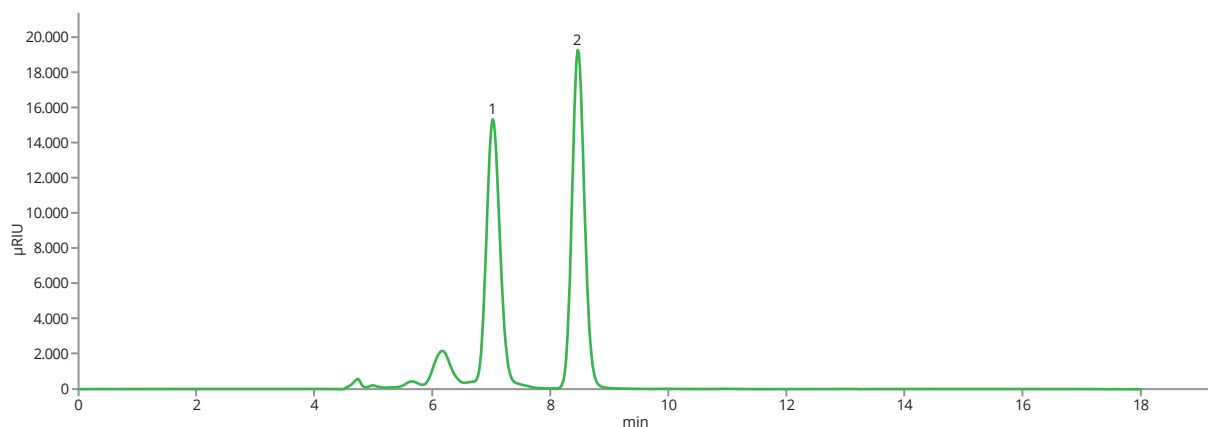
*Meadow honey profile on ASTRA® Sugar Ca column*



## Sugars in honey



*Desert false indigo honey profile on ASTRA® Sugar Ca column*

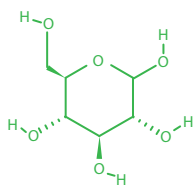


*Goldenrod honey profile on ASTRA® Sugar Ca column*

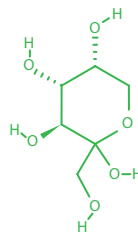


## Sugars in honey

<b>Column</b>	ASTRA® Sugar Ca(S), 10 µm
<b>Dimensions</b>	300 mm × 8 mm
<b>Part number</b>	AST-5906-VN80
<b>Mobile phase</b>	100% H <sub>2</sub> O
<b>Flow rate</b>	1.0 mL/min
<b>Temperature</b>	80 °C
<b>Injection volume</b>	3 µL
<b>Detection</b>	RID (55 °C)
<b>Analytes</b>	<b>1. Glucose, CAS number 2280-44-6</b> <b>2. Fructose, CAS number 57-48-7</b>



Glucose



Fructose