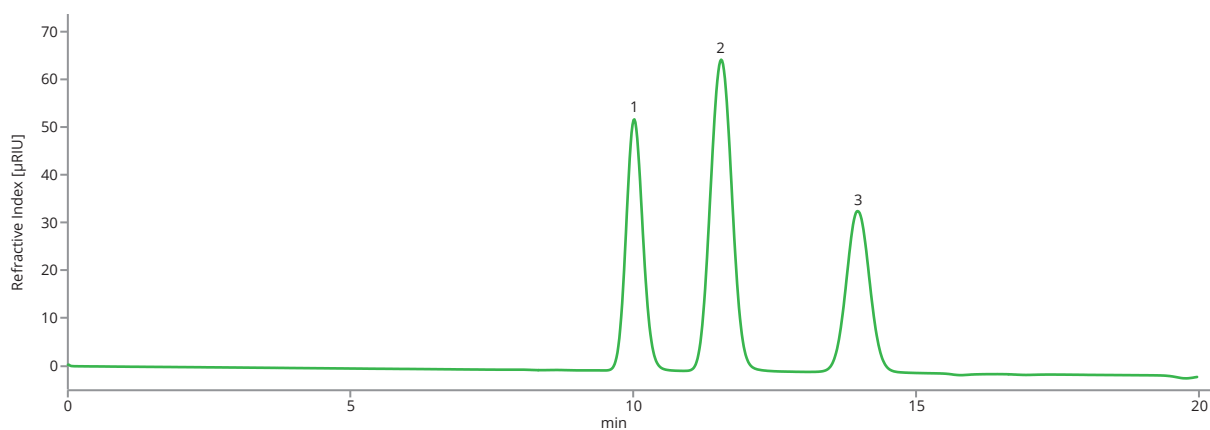
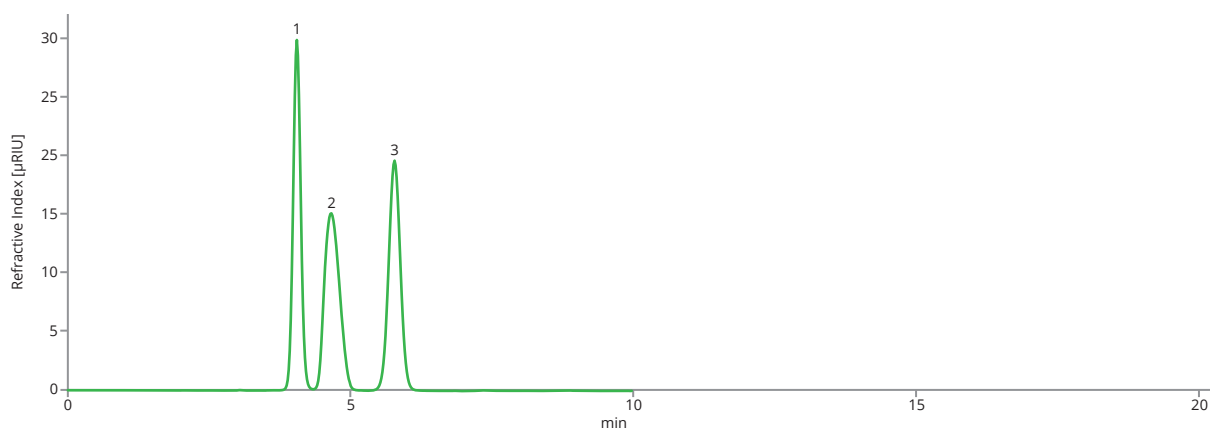


Analysis of sugars

The analysis of saccharides and sugar alcohol is one of the most common criteria in food and beverage analyses in the QC laboratories of manufacturers and the subject of monitoring from authorities. This analysis is also used to detect food and beverage adulteration.



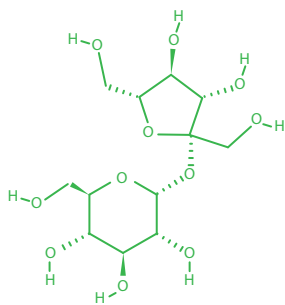
Analysis onv ASTRA® Sugar Ca(S) column at 0.5 mL/min



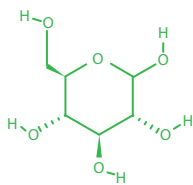
Analysis onv ASTRA® Sugar Ca(S) column at 1.5 mL/min

Analysis of sugars

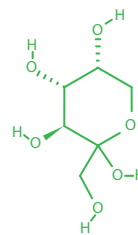
Column	ASTRA® Sugar Ca (S), 10 µm
Dimensions	300 mm × 8 mm
Part number	AST-5906-VN80
Mobile phase	100% H ₂ O
Temperature	70 °C
Injection volume	20 µL
Detection	RID (35 °C)
Analytes	1. Sucrose, CAS number 57-50-1 2. Glucose, CAS number 2280-44-6 3. Fructose, CAS number 57-48-7



Sucrose



Glucose



Fructose