

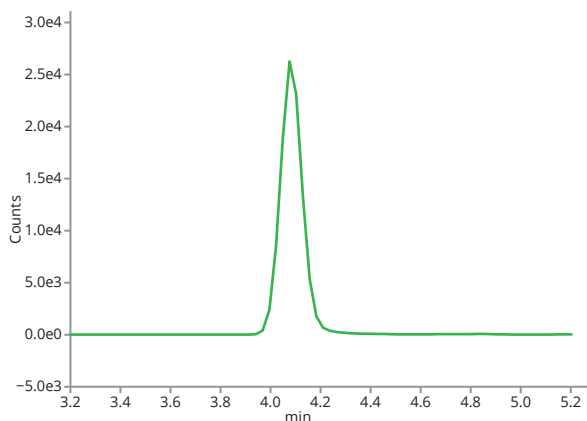


## API glucuronide by LC/MS

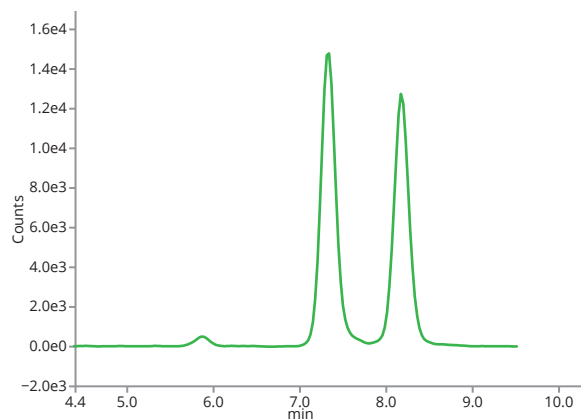
This application shows high ASTRA® HPLC column stability in the pharmacokinetic assay. API is used in hypolipidemic therapy adjusting cholesterol levels in the human body.

### Substance

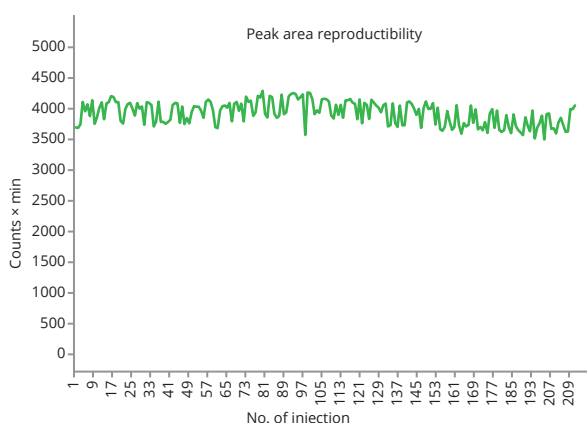
An agent of a novel class of selective Cholesterol absorption inhibitors



Scan 1 – API glucuronide



Scan 2 – API isomers



Plasma sample on ASTRA® C18-HE column



## API glucuronide by LC/MS

<b>Column</b>	ASTRA® C18-HE, 5 µm
<b>Dimensions</b>	150 mm × 4.6 mm
<b>Part number</b>	AST-5732-LK46
<b>Mobile phase</b>	MeOH : ACN : Water : 0.1% NH <sub>4</sub> OH 25/50/20/5 (v/v/v/v) Isocratic elution
<b>Flow rate</b>	0.45 ml/min
<b>Temperature</b>	Ambient
<b>Injection volume</b>	15 µl
<b>Detection</b>	MS/MS
<b>Mode</b>	ESI, Negative 2500 eV
<b>MS Temperature</b>	350 °C (capillary), 380 °C (vaporizer)
<b>Collision gas</b>	Argon
<b>Instrument</b>	TSQ Quantiva (Thermo Fisher Scientific)
<b>Analytes</b>	<b>1. API (proprietary)</b>

Compound name	Q1 (m/z)	Q2 (m/z)	Collision cell pressure	Collision energy
API Glucuronide D4	588	275	2 mTorr	29 eV
API D	412	275	2 mTorr	29 eV